



# CHCNAV CGO

## Technical FAQ



Surveying & Engineering | December 2023

Make your work more efficient

## Preparation

### Hardware requirements:

- 1.System: windows×64 bit( win7, win10, win11)
- 2.RAM: 16GB or higher
- 3.GPU: NVIDIA Geforce 2GB or higher, TFLOPS > 3.5
- 4.ROM: System disk remaining space > 10GB
- 5.Driver: Latest

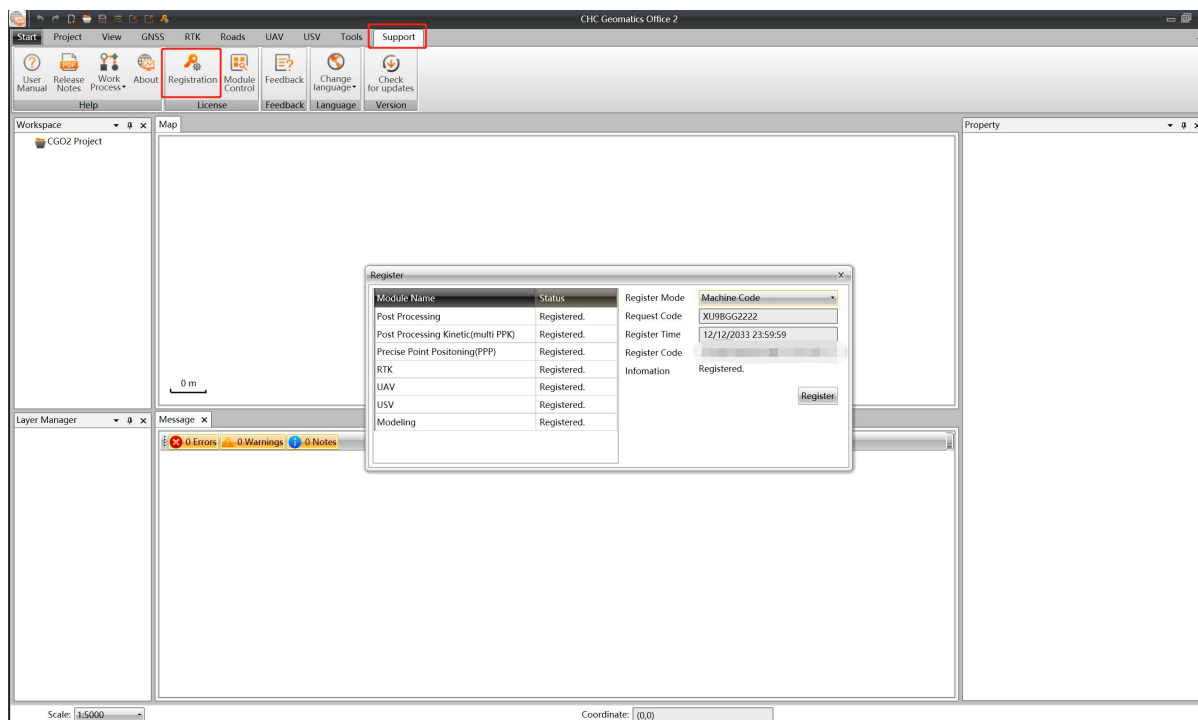
### Software requirement:

CGO-2.3.2.20231208-Demo-win64 or higher

<https://chcnavigation.jianguoyun.com/p/Dfu15goQ-YPeCxji96sFIAA>

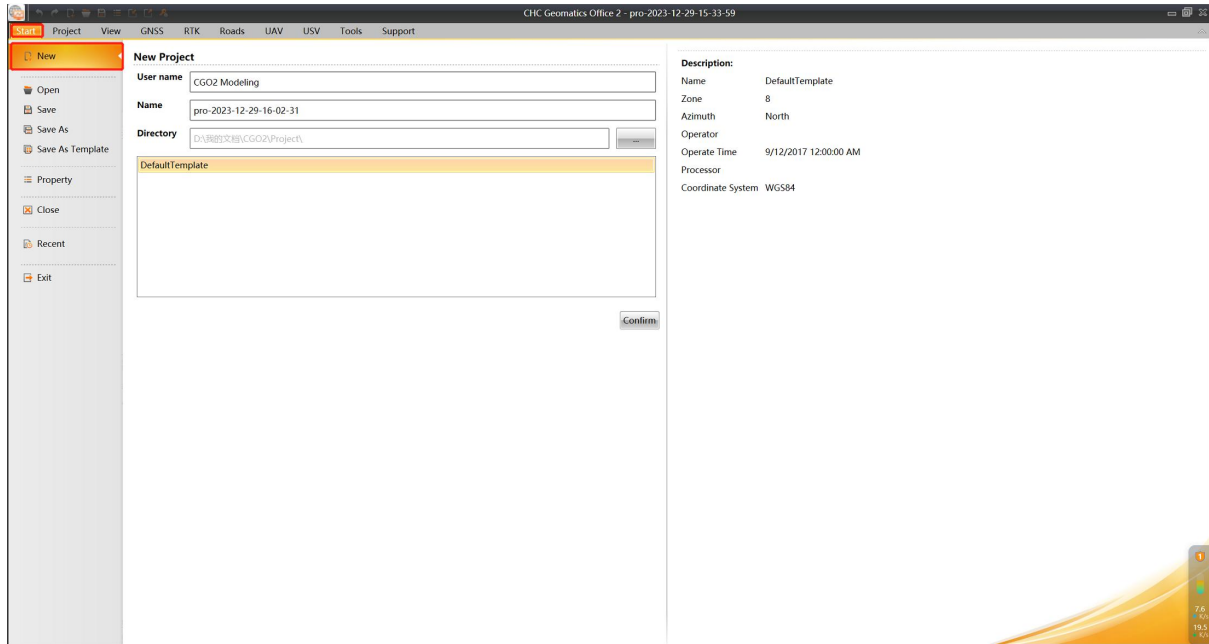
### Software registration:

After installation, please send the dongle key or machine code to CHCNAV team by clicking **Support-Registration**.

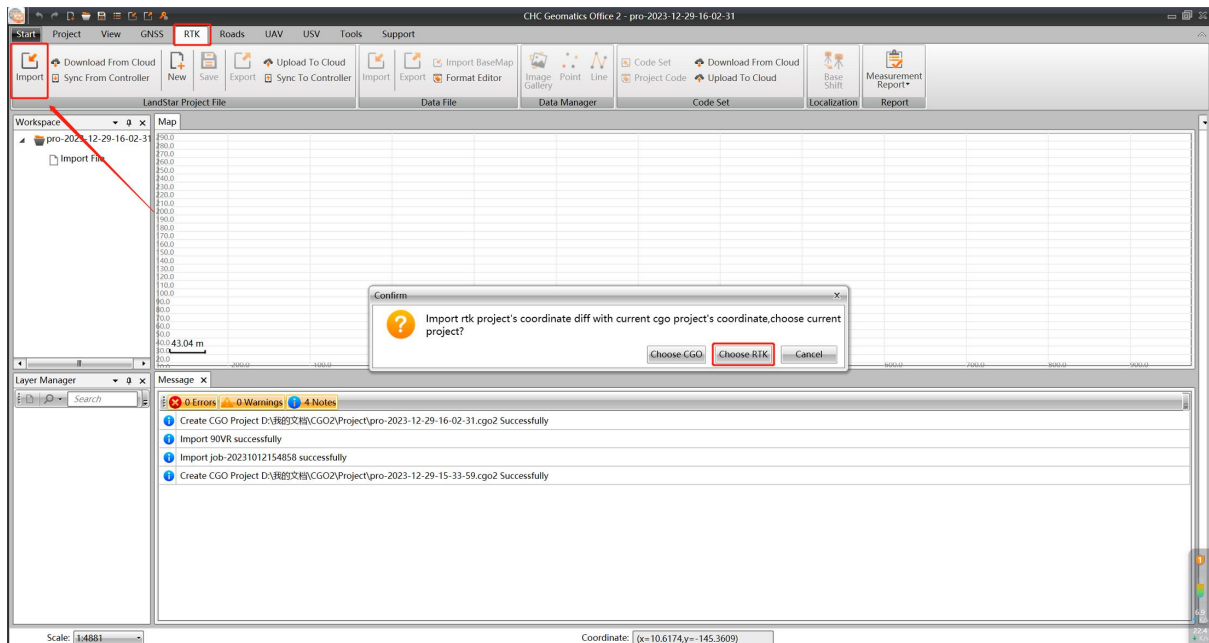


## Steps

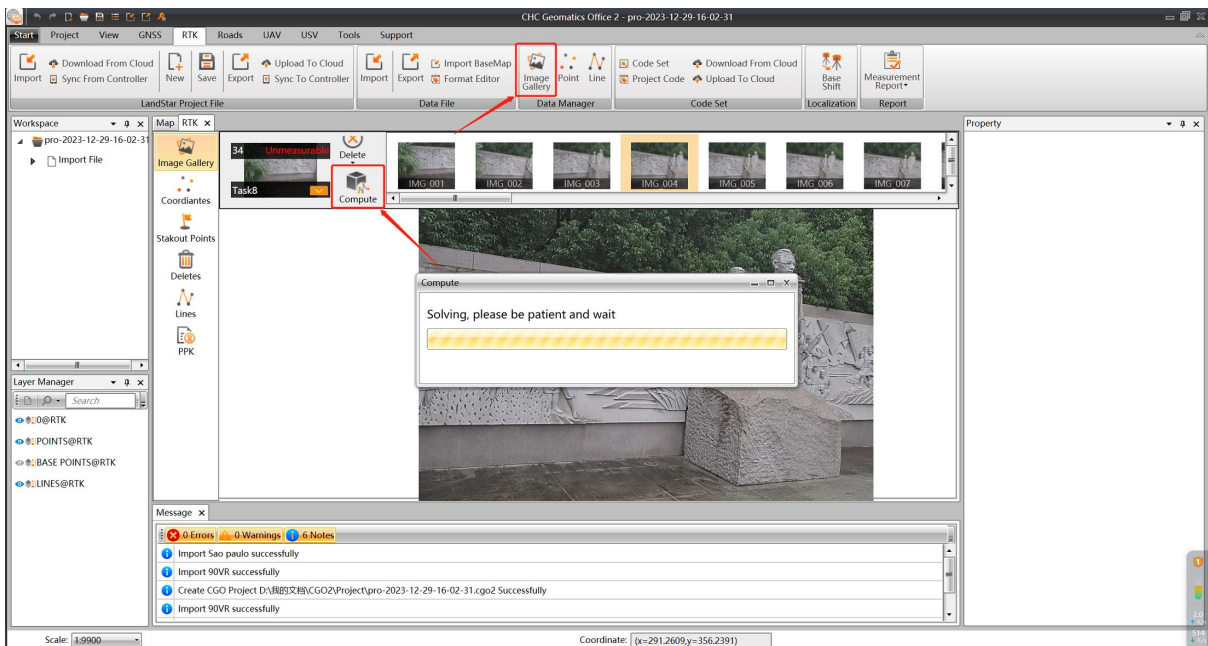
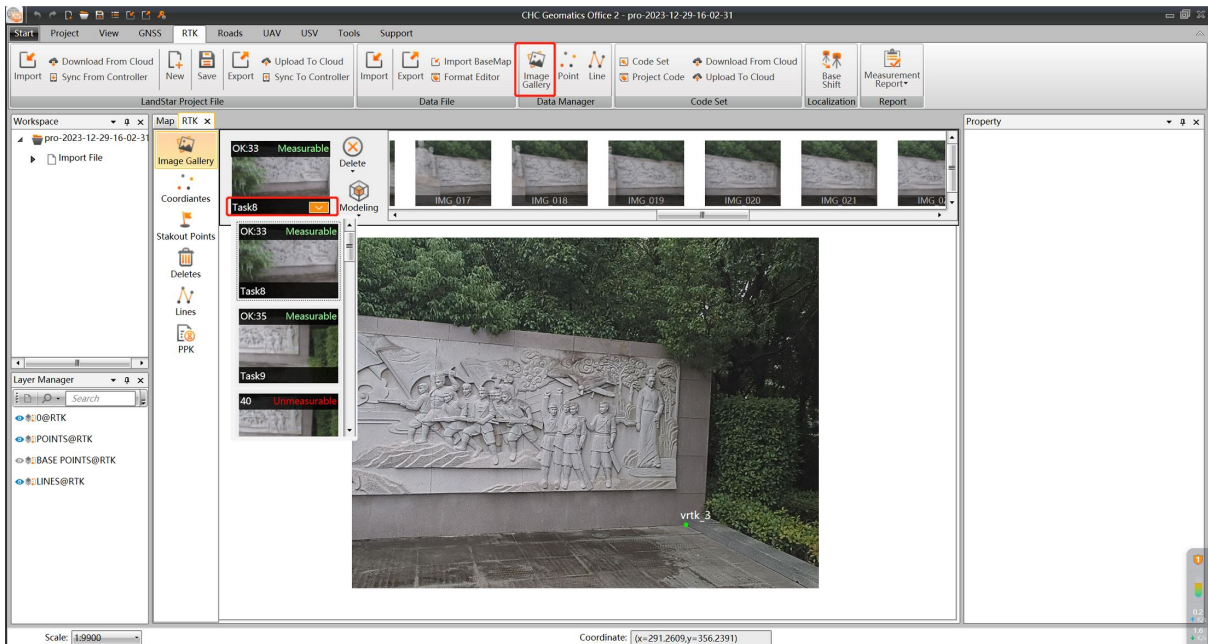
1. Project: Run CGO software, click on **Start-New** to create a project, modify the name and storage path if necessary.



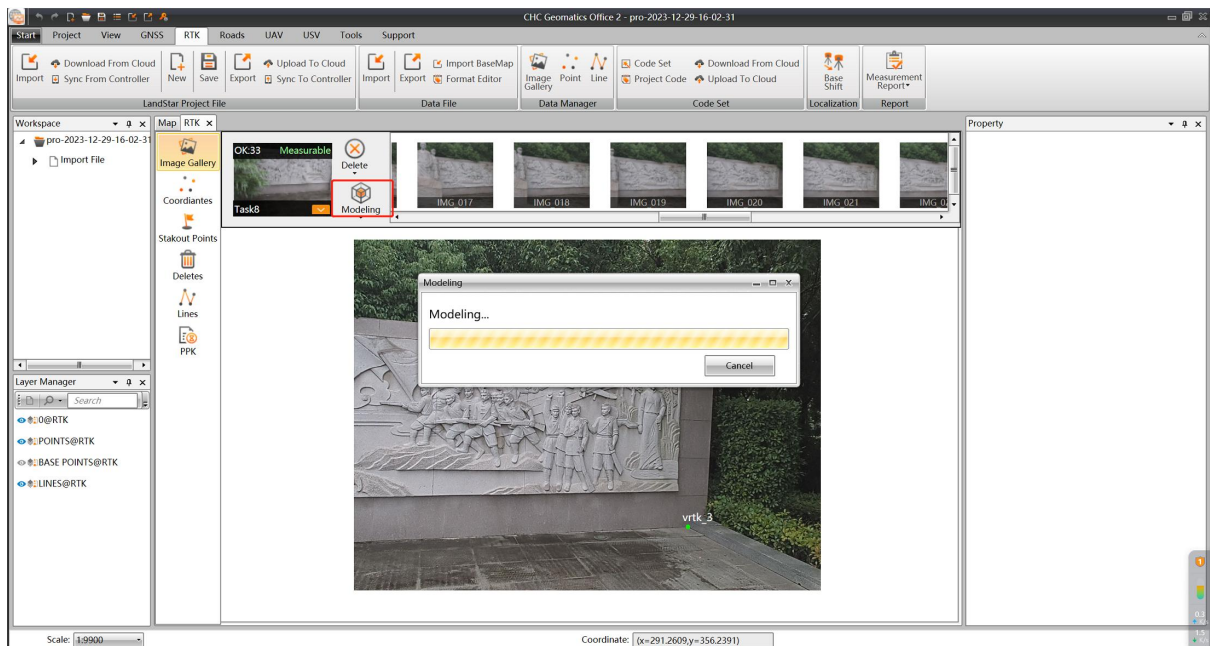
2. Click on **RTK** module and import the project exported from Landstar.



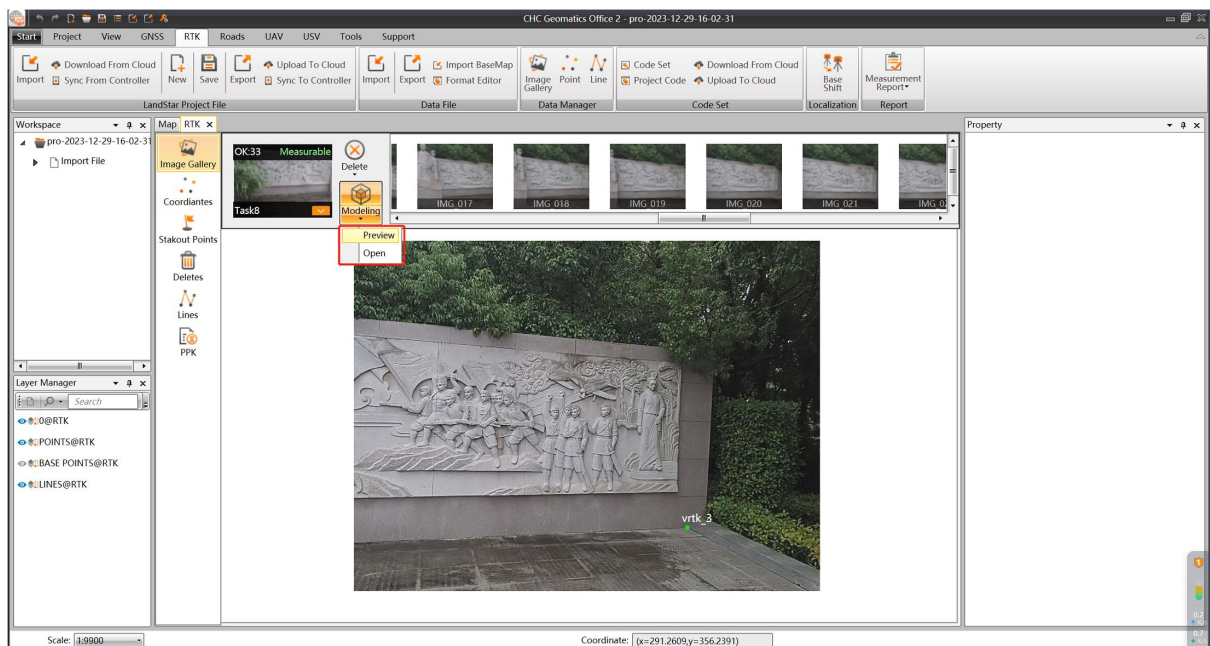
3. Click on **Image Gallery** and choose the target task, then click **Compute** to start the data processing.

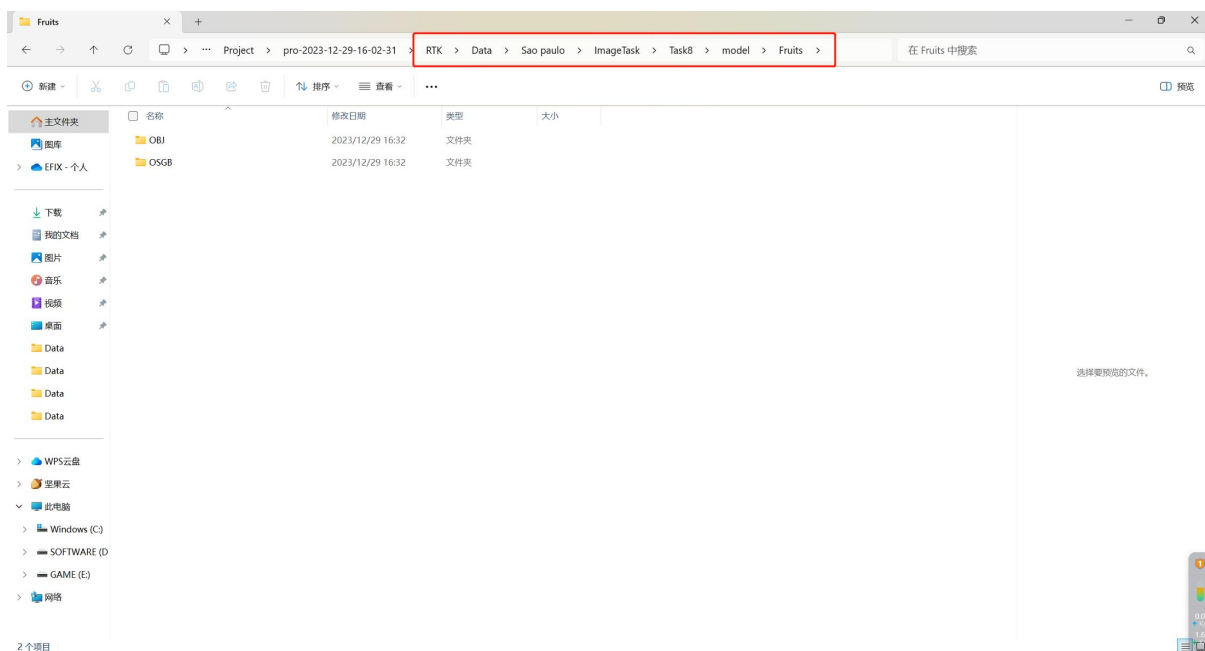
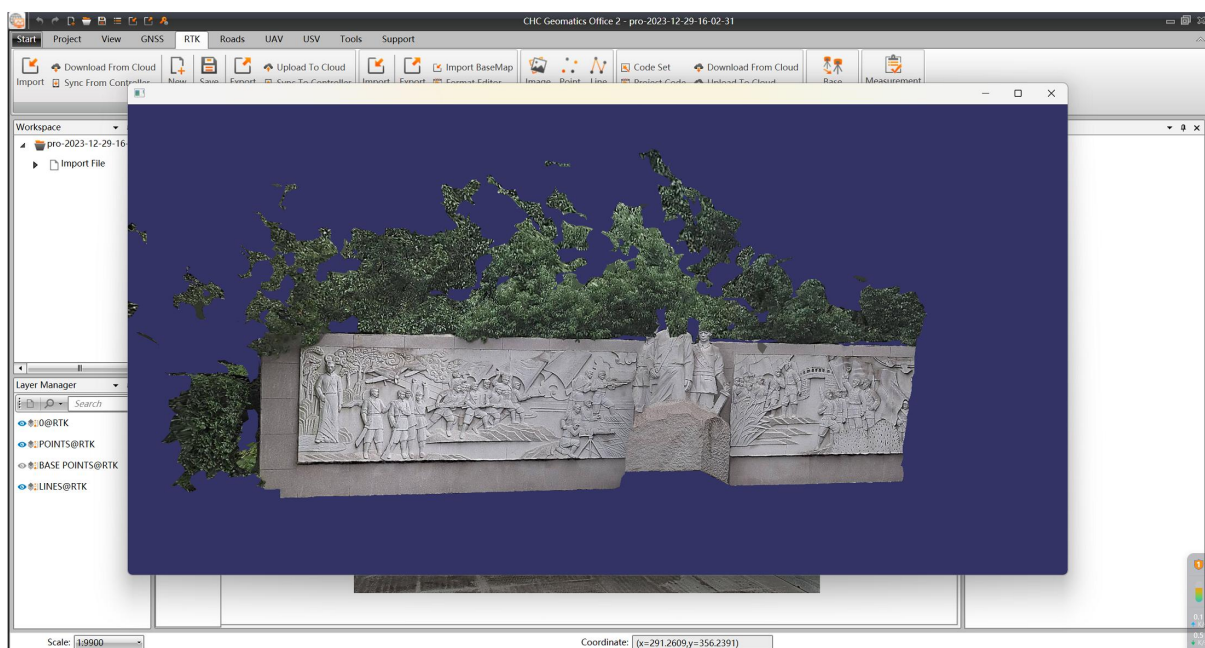


4. After processing, click on **Modeling** to start modeling.



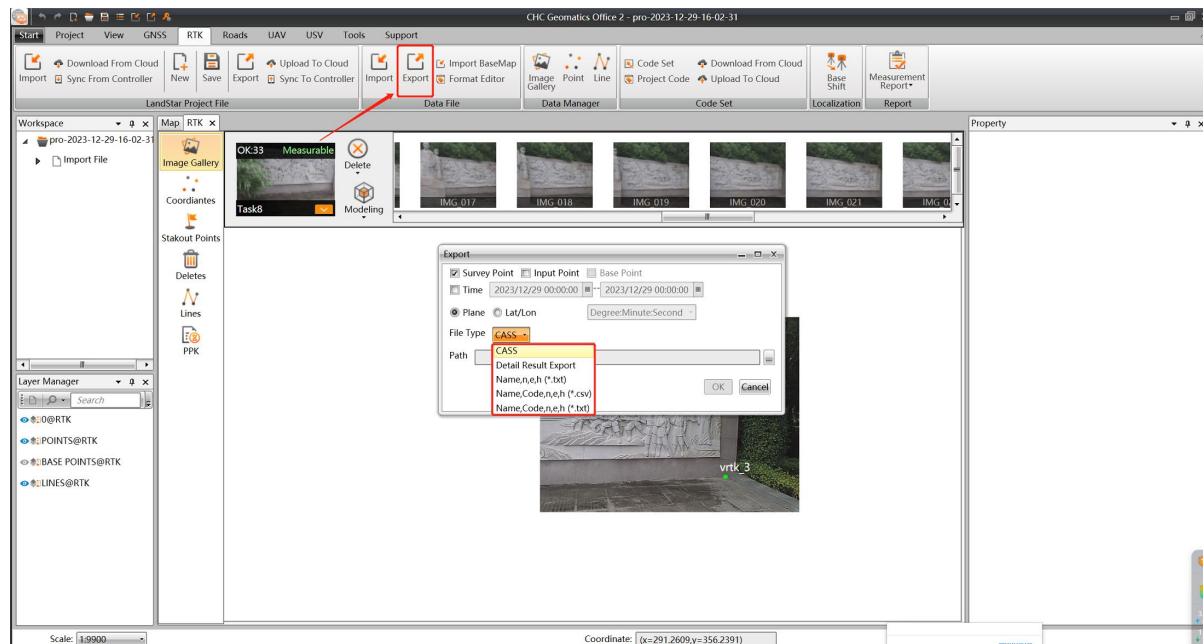
5. Click **Preview** to view the model, and click **Open** to view the OSGB and OBJ files.





6. After step 3, we can also perform the points capture on each picture refer to the video link below, then click on Export to export the points.

<https://chcnavigation.jianguoyun.com/p/DdzZY4wQ-YPeCxj1-6sFIAA>



## CHC Navigation

Building D, NO. 577 Songying Road, Qingpu District,  
201703 Shanghai, China

Tel: +86 21 542 60 273 | Fax: +86 21 649 50 963

Email: sales@chcnavigation.com | support@chcnavigation.com

Skype: chc\_support

Website: www.chcnavigation.com